



DOGON | GROUP

PROPERTIES

THE FYNBOS FLOOR PLANS



THE FYNBOS

HEAD OFFICE 021 433 2580

dogongroup.com

A visionary company with decades of experience



DOGON | GROUP

PROPERTIES

COMPANY PARTICULARS

Established in 2002 and founded by Denise Dogon, Dogon Group Properties has proven to be a true real estate success story. The Dogon name has become synonymous with the proficient and effective marketing and selling of premium grade properties in Cape Town and particularly the sought-after Atlantic Seaboard. Dogon Group currently have offices in high profile positions in Sea Point and Southern Suburbs.

Dogon Group Properties prides itself on its unique and focused approach to marketing and sales, providing a comprehensive and tailored solution to ensure that sales occur at the optimum price within a compressed space of time. The company utilizes an evolved and distinctive sales force of highly adept and skilled sales agents who are selected for their extensive experience, professionalism and successful track records.

Headed by Managing Director Alexa Horne, Dogon Group has a dedicated in-house marketing department ensuring that focused and specialized marketing strategies are implemented. The powerful proprietary Dogon Group database combined with its eye-catching and prominent advertising, both in print and digital media, together with our visible network of sales offices support our strong performance on the Western Cape's Atlantic Seaboard, Southern Suburbs, Western Seaboard and surrounding areas.

DOGON GROUP PROPERTIES (PTY) LTD
REGISTRATION NO: 2002/020365/07
ALEXA HORNE (MANAGING DIRECTOR)

P O BOX 605 SEA POINT 8060
THE KINGS, 101 REGENT ROAD
SEA POINT, SOUTH AFRICA
TEL +27 21 433 2580
FAX +27 21 433 2781

SALES AGENTS



BYRON KRUGER
082 401 5179



KEITH ANDERSON
083 540 5033



KEAGAN JAMES
082 902 8202

HEAD OFFICE 021 433 2580

dogongroup.com

A visionary company with decades of experience

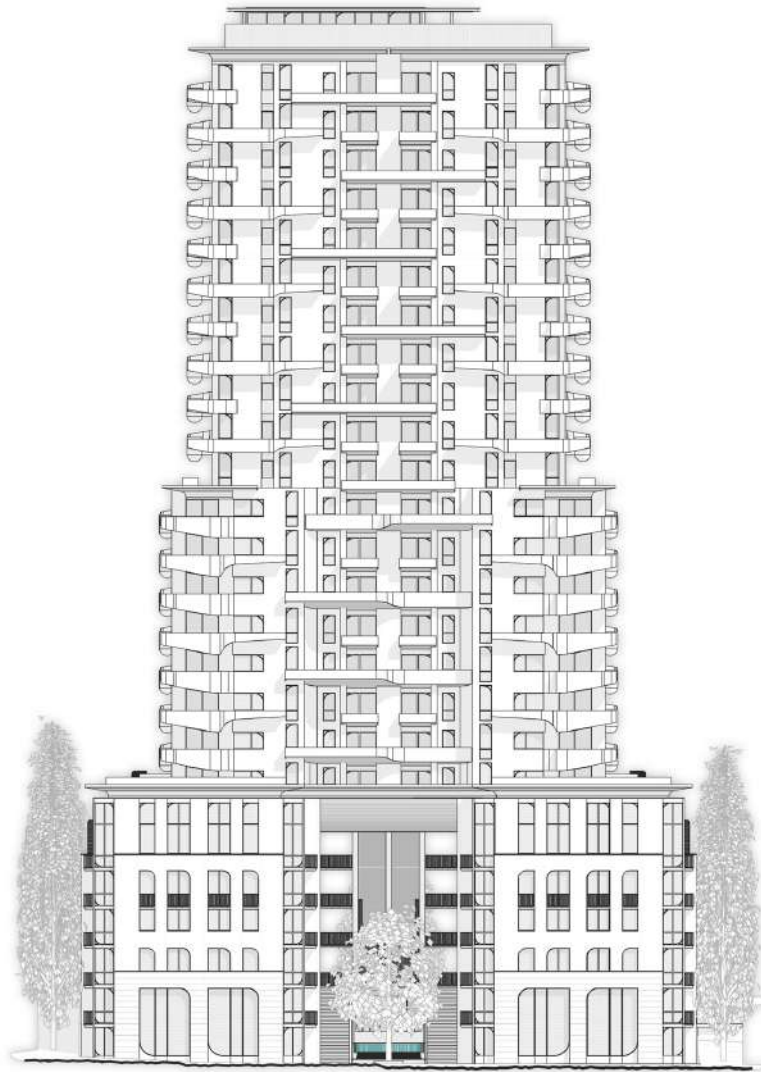
28
02 TwentyEightZeroTwo
Architects

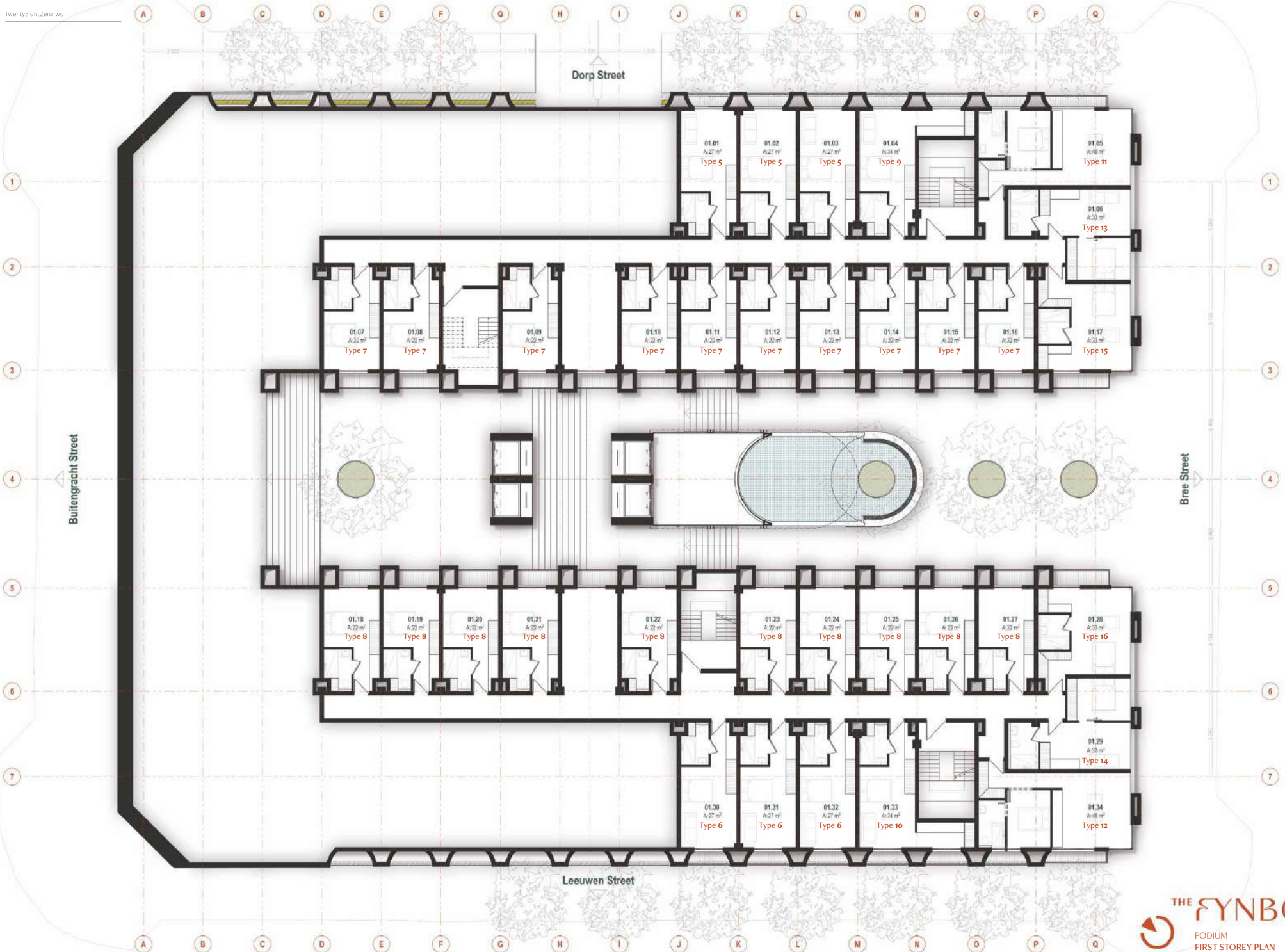
THE FYNBOS

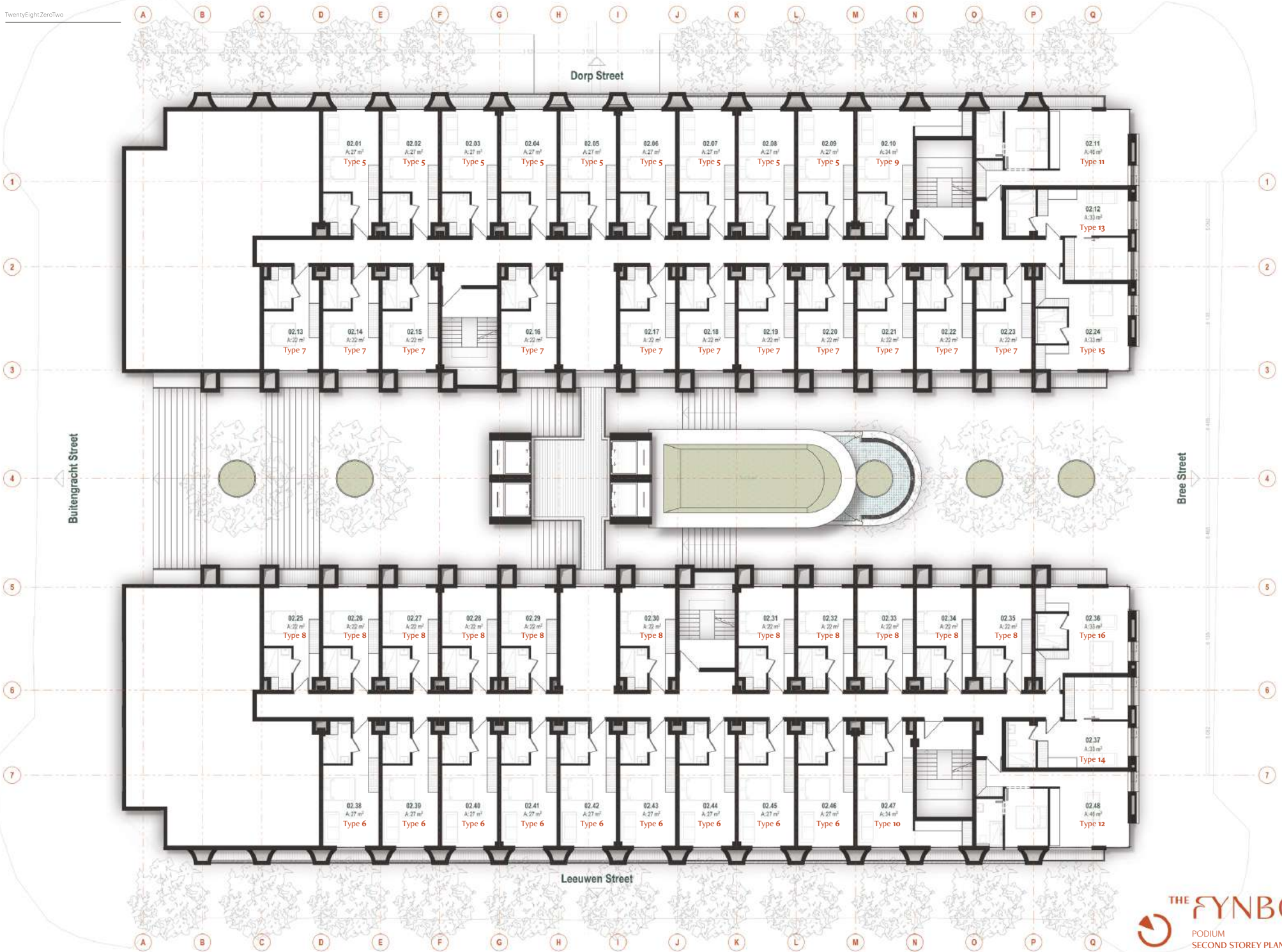
GENERAL LEVEL PLANS

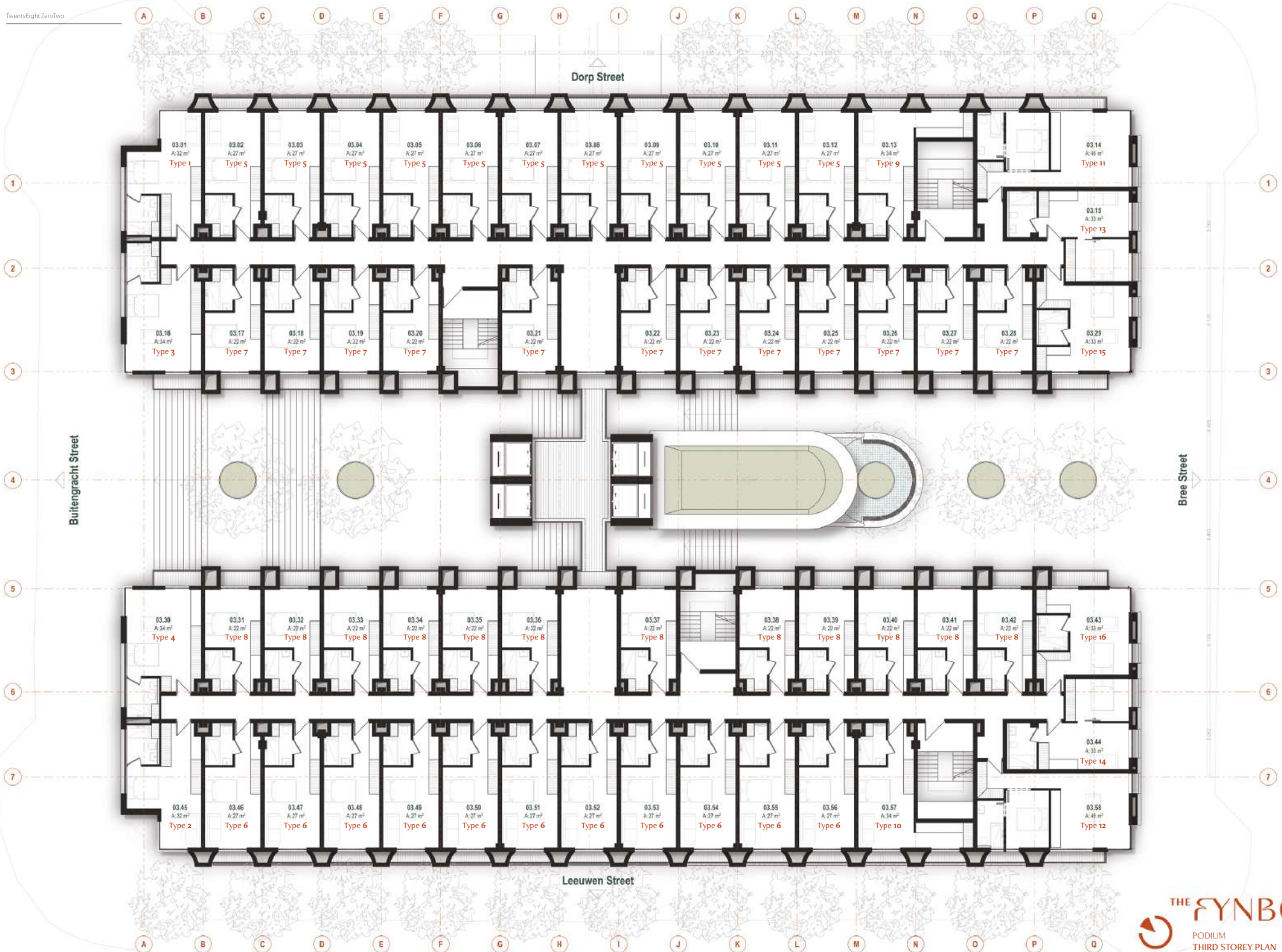
- _____ TWENTY-FOURTH STOREY
- _____ TWENTY-THIRD STOREY
- _____ TWENTY-SECOND STOREY
- _____ TWENTY-FIRST STOREY
- _____ TWENTIETH STOREY
- _____ NINETEENTH STOREY
- _____ EIGHTEENTH STOREY
- _____ SEVENTEENTH STOREY
- _____ SIXTEENTH STOREY
- _____ FIFTEENTH STOREY
- _____ FOURTEENTH STOREY
- _____ THIRTEENTH STOREY
- _____ TWELFTH STOREY
- _____ ELEVENTH STOREY
- _____ TENTH STOREY
- _____ NINTH STOREY
- _____ EIGHTH STOREY
- _____ SEVENTH STOREY
- _____ SIXTH STOREY

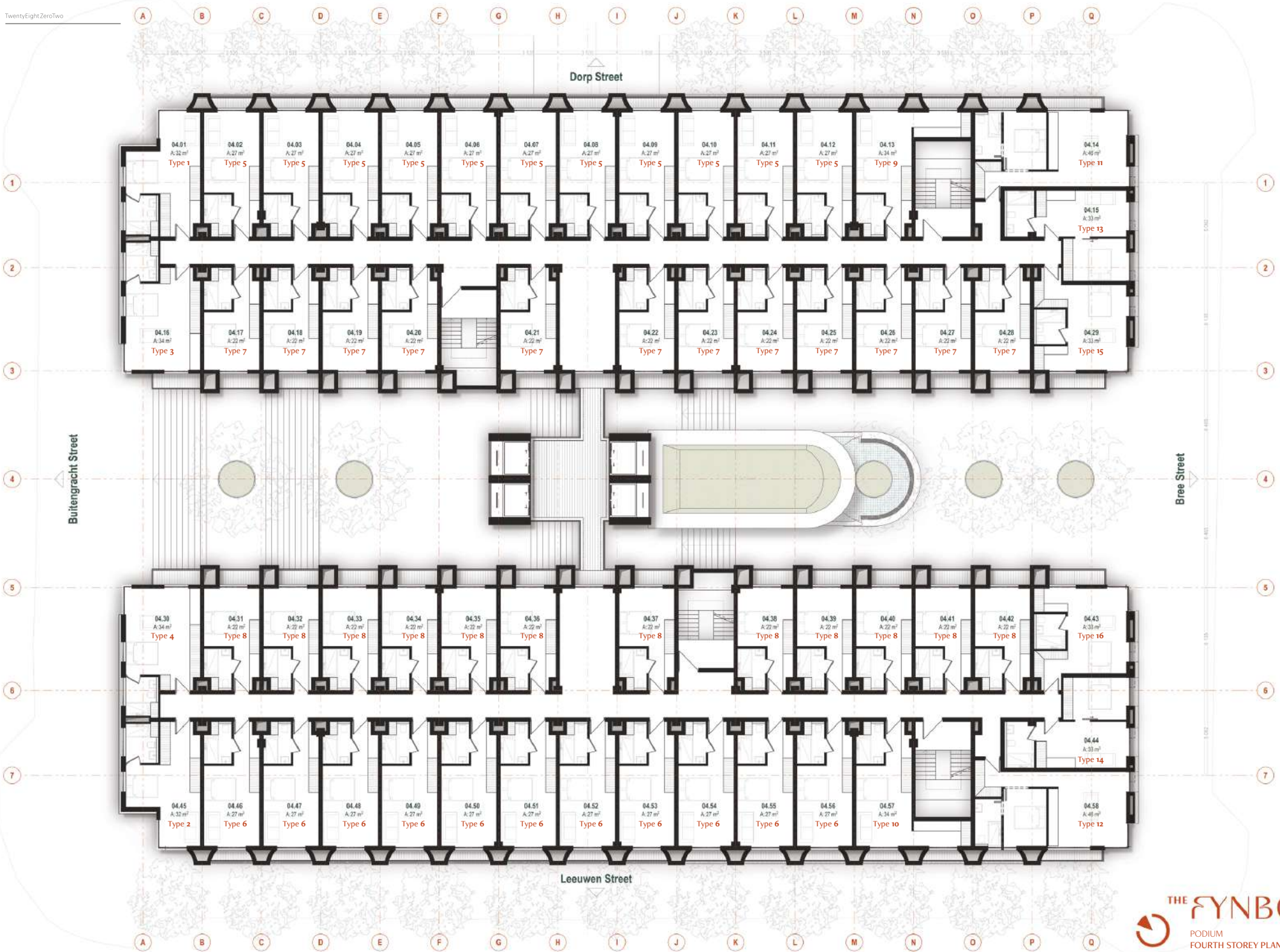
- _____ FIFTH STOREY
- _____ FOURTH STOREY
- _____ THIRD STOREY
- _____ SECOND STOREY
- _____ FIRST STOREY

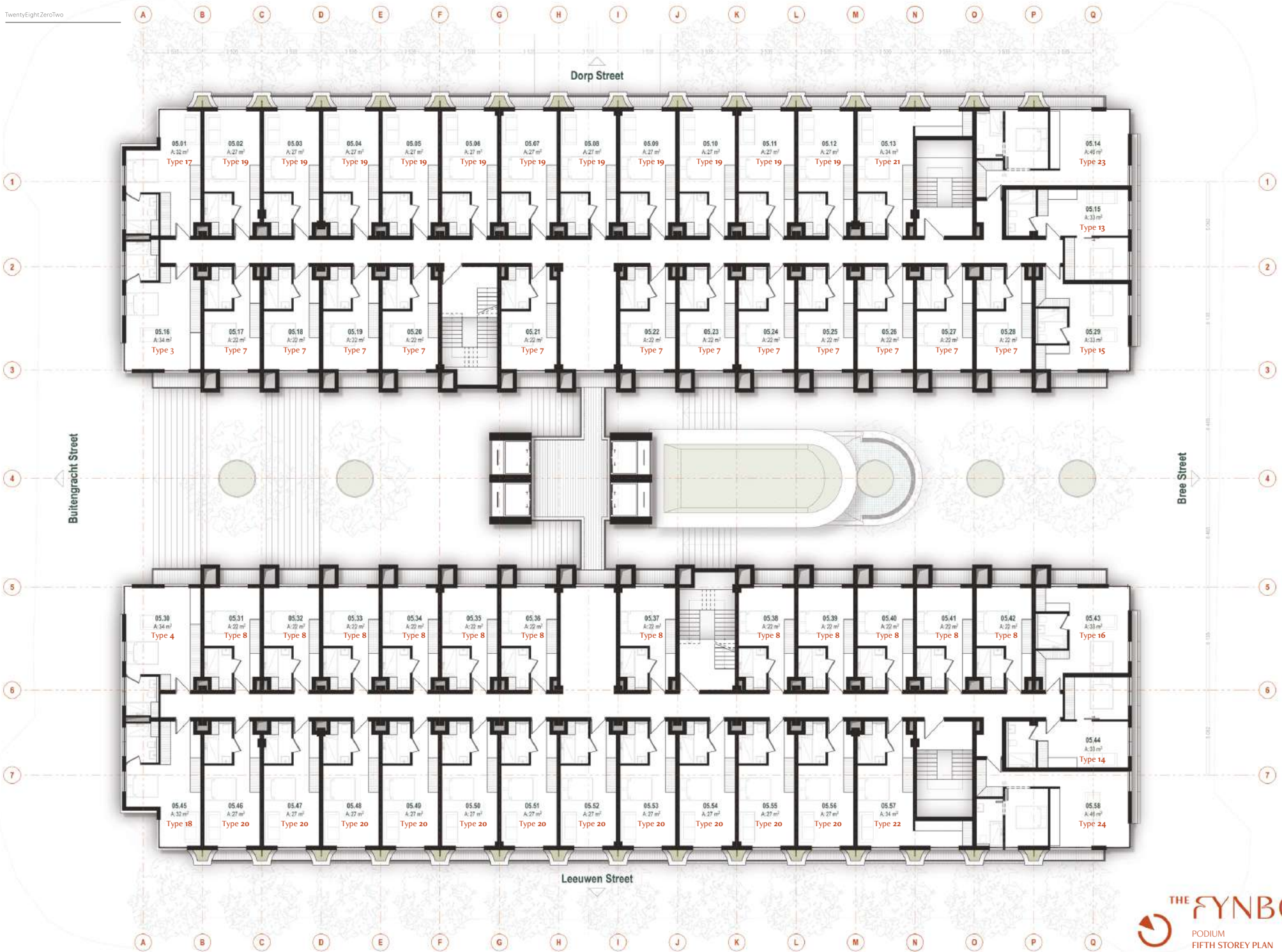












A B C D E F G H I J K L M N O P Q

Dorp Street



Buitengracht Street

Bree Street

Leeuwen Street

A B C D E F G H I J K L M N O P Q

