



**DEVELOPMENTS**

**19 THERESA**  
FLOOR PLANS



**19 THERESA**

HEAD OFFICE **021 433 2580**

**dogongroup.com**

*A visionary company with decades of experience*



## DEVELOPMENTS

### COMPANY PARTICULARS

Established in 2002, Dogon Group Properties has proven to be a true real estate success story. The Dogon name has become synonymous with the proficient and effective marketing and selling of premium grade properties in Cape Town and particularly the sought-after Atlantic Seaboard. Dogon Group currently have offices in high profile positions in Sea Point and Southern Suburbs.

Dogon Group Properties prides itself on its unique and focused approach to marketing and sales, providing a comprehensive and tailored solution to ensure that sales occur at the optimum price within a compressed space of time. The company utilizes an evolved and distinctive sales force of highly adept and skilled sales agents who are selected for their extensive experience, professionalism and successful track records.

Headed by Managing Director Alexa Horne, Dogon Group has a dedicated in-house marketing department ensuring that focused and specialized marketing strategies are implemented. The powerful proprietary Dogon Group database combined with its eye-catching and prominent advertising, both in print and digital media, together with our visible network of sales offices support our strong performance on the Western Cape's Atlantic Seaboard, Southern Suburbs, Western Seaboard and surrounding areas.

DOGON GROUP PROPERTIES (PTY) LTD  
REGISTRATION NO: 2002/020365/07  
REGISTERED WITH THE PPRA - FFC No. F110941  
ALEXA HORNE (MANAGING DIRECTOR)

P O BOX 605 SEA POINT 8060  
THE KINGS, 101 REGENT ROAD  
SEA POINT, SOUTH AFRICA  
TEL +27 21 433 2580  
FAX +27 21 433 2781

### SALES AGENT



PAUL UPTON  
**071 610 8088**  
paul@dogongroup.com

Registered with the PPRA - Full Status Agent - FFC No. 0525859

HEAD OFFICE **021 433 2580**

**dogongroup.com**

*A visionary company with decades of experience*

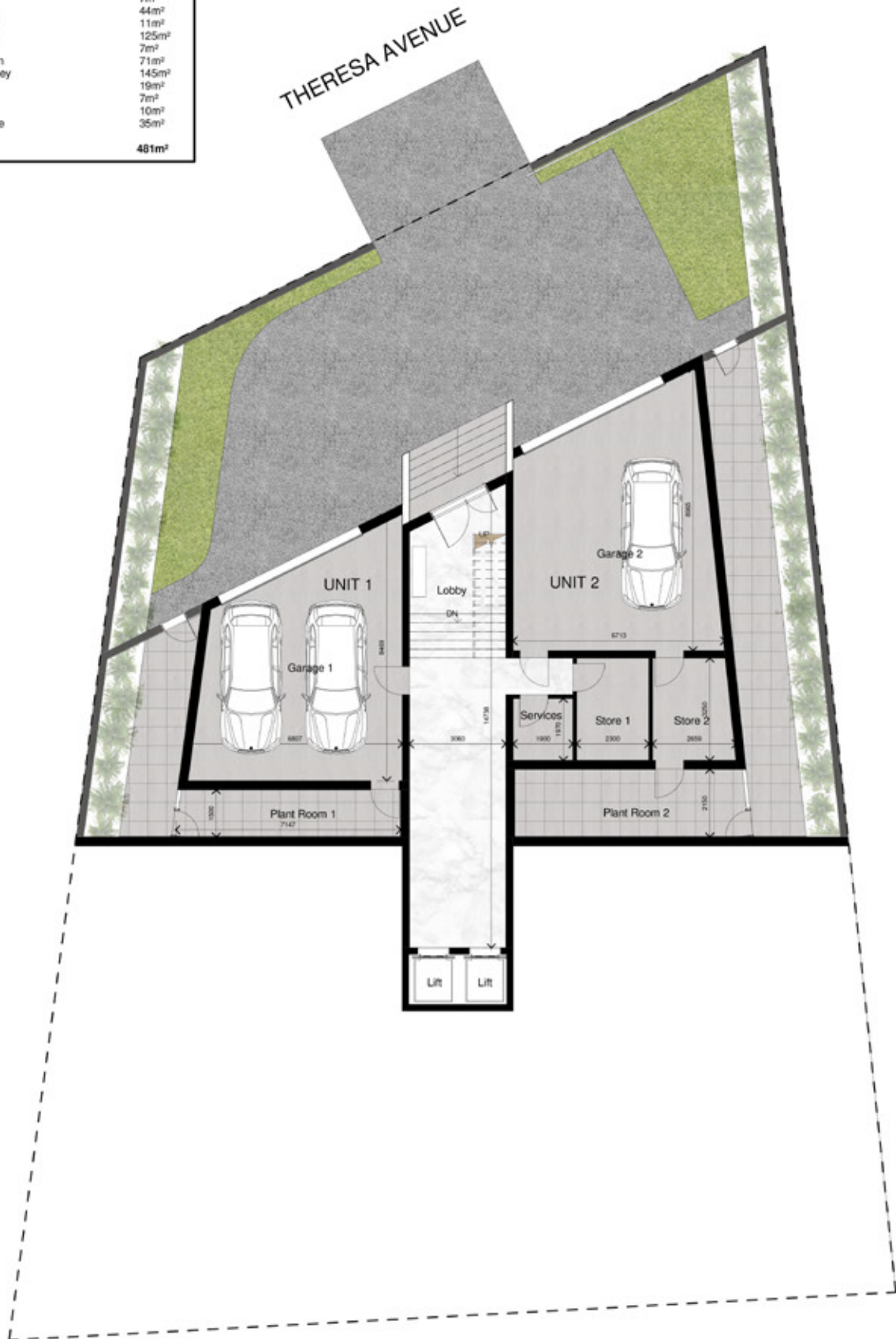
**ERF 3099 Dwelling Sizes**

**NOTES:**

All square meters have been measured to the internal finish face of walls.

**UNIT 1**

Storage	7m <sup>2</sup>
Garage	44m <sup>2</sup>
Plant Room	11m <sup>2</sup>
First Storey	125m <sup>2</sup>
Balcony	7m <sup>2</sup>
Patio/Garden	71m <sup>2</sup>
Second Storey	145m <sup>2</sup>
Terrace	19m <sup>2</sup>
Pool	7m <sup>2</sup>
Mezzanine	10m <sup>2</sup>
Roor Terrace	35m <sup>2</sup>
<b>Total</b>	<b>481m<sup>2</sup></b>



**GROUND STOREY**  
1:100



**ERF 3099 Dwelling Sizes**

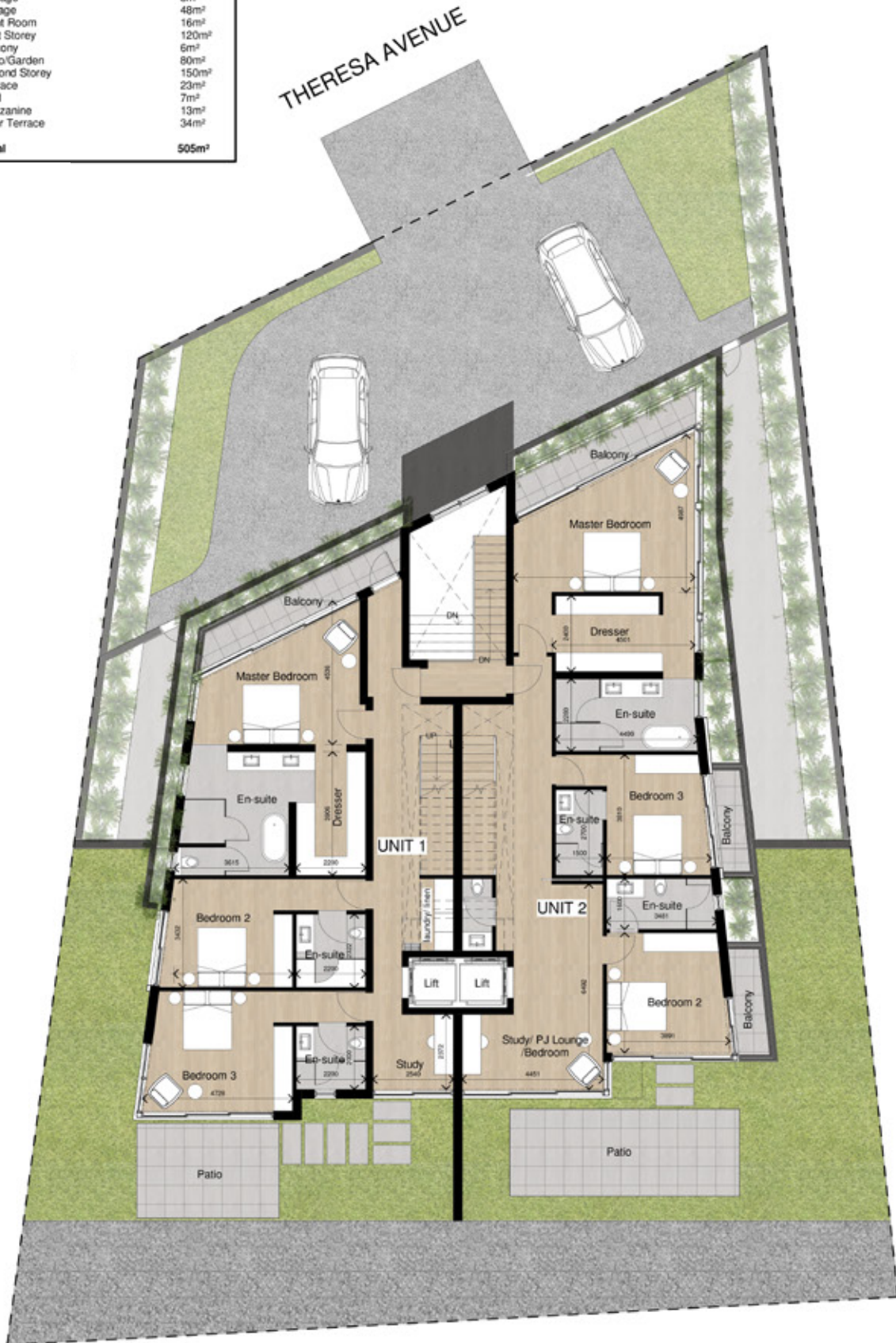
**NOTES:**

All square meters have been measured to the external finish face of walls.

**UNIT 2**

Storage	8m <sup>2</sup>
Garage	48m <sup>2</sup>
Plant Room	16m <sup>2</sup>
First Storey	120m <sup>2</sup>
Balcony	6m <sup>2</sup>
Patio/Garden	80m <sup>2</sup>
Second Storey	150m <sup>2</sup>
Terrace	23m <sup>2</sup>
Pool	7m <sup>2</sup>
Mezzanine	13m <sup>2</sup>
Roof Terrace	34m <sup>2</sup>

**Total** 505m<sup>2</sup>



**FIRST STOREY**  
1:100

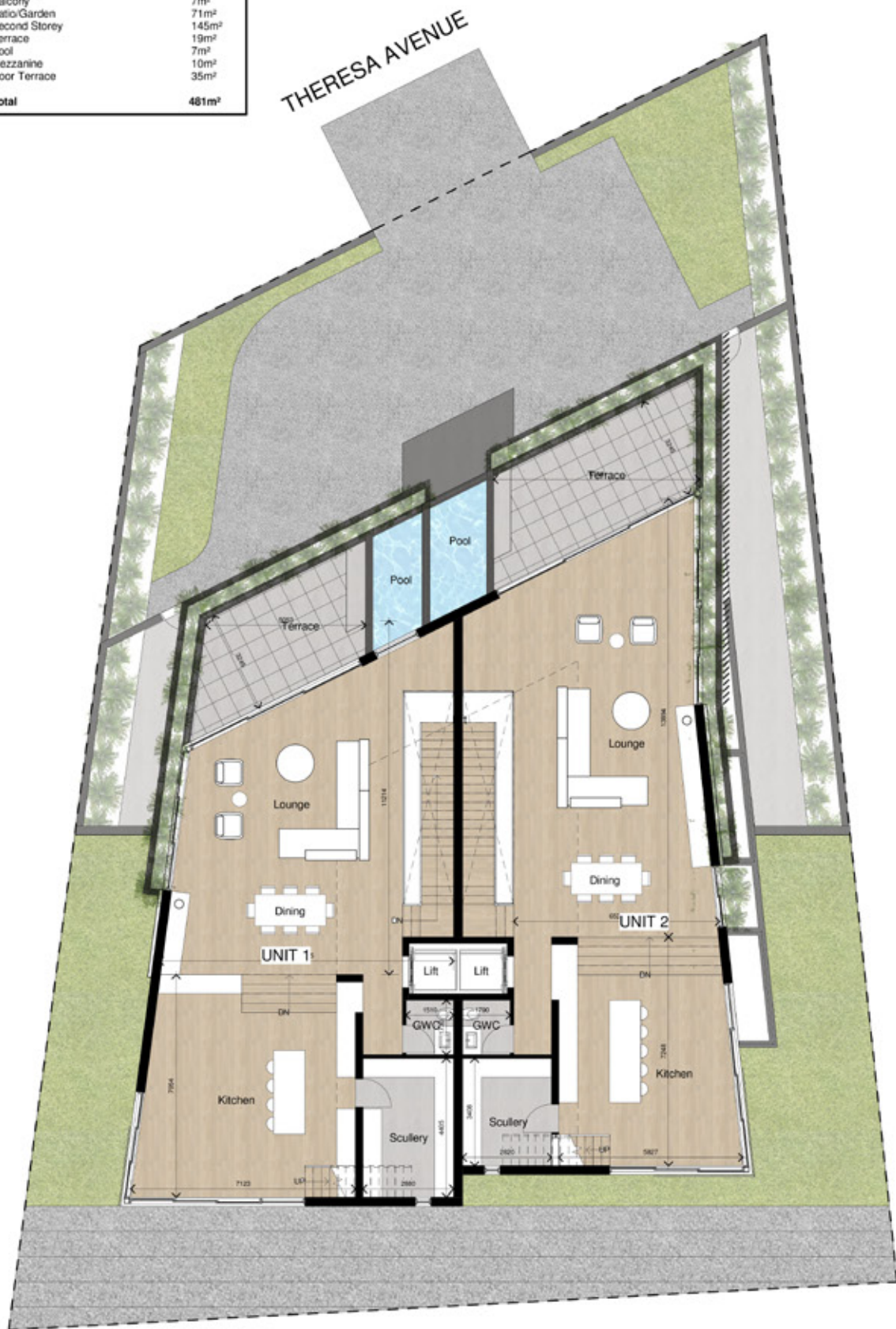
**ERF 3099 Dwelling Sizes**

**NOTES:**

All square meters have been measured to the internal finish face of walls.

**UNIT 1**

Storage	7m <sup>2</sup>
Garage	44m <sup>2</sup>
Plant Room	11m <sup>2</sup>
First Storey	125m <sup>2</sup>
Balcony	7m <sup>2</sup>
Patio/Garden	71m <sup>2</sup>
Second Storey	145m <sup>2</sup>
Terrace	19m <sup>2</sup>
Pool	7m <sup>2</sup>
Mezzanine	10m <sup>2</sup>
Roof Terrace	35m <sup>2</sup>
<b>Total</b>	<b>481m<sup>2</sup></b>



**SECOND STOREY  
1:100**



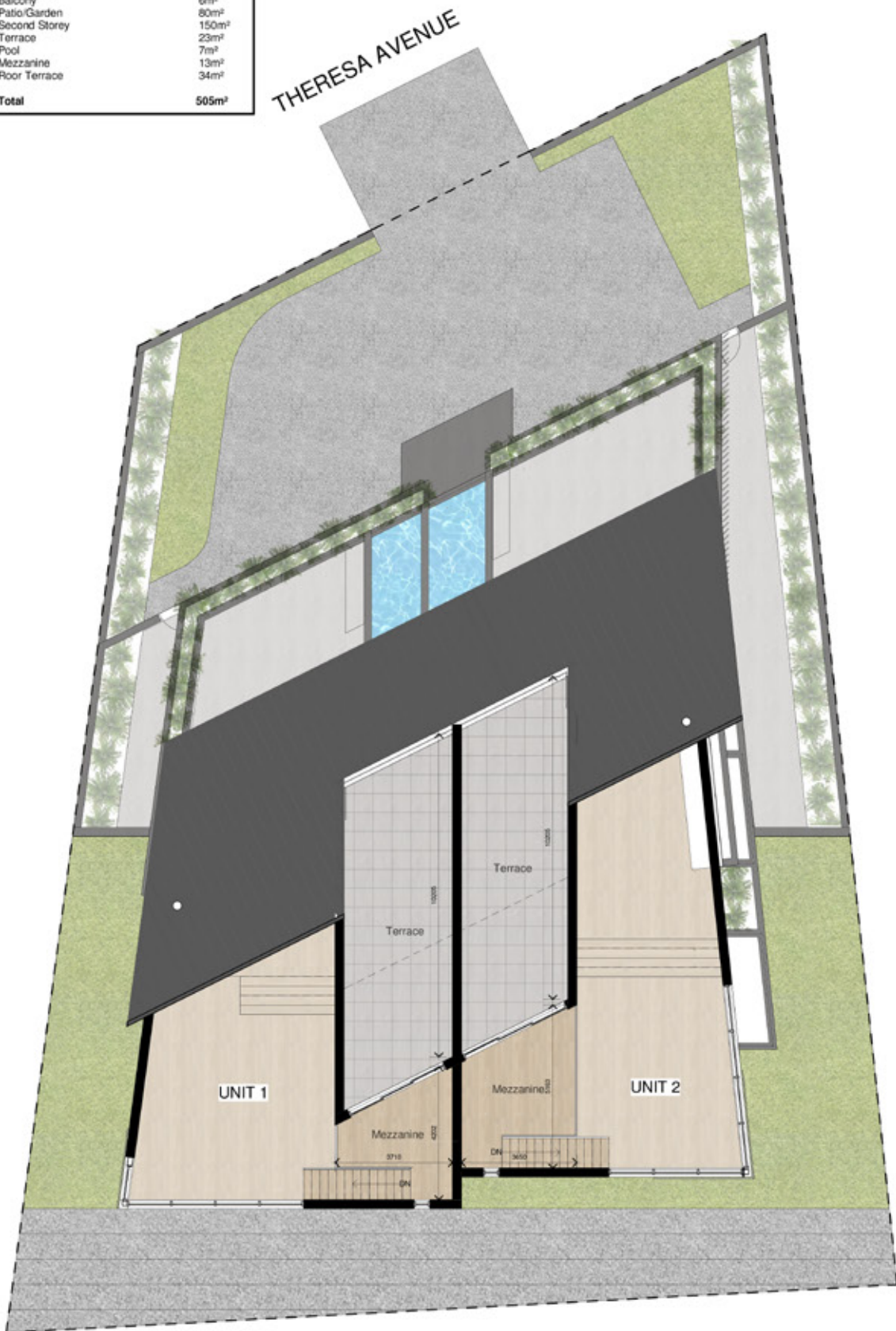
**ERF 3099 Dwelling Sizes**

**NOTES:**

All square meters have been measured to the external finish face of walls.

**UNIT 2**

Storage	8m <sup>2</sup>
Garage	48m <sup>2</sup>
Plant Room	16m <sup>2</sup>
First Storey	120m <sup>2</sup>
Balcony	6m <sup>2</sup>
Patio/Garden	80m <sup>2</sup>
Second Storey	150m <sup>2</sup>
Terrace	23m <sup>2</sup>
Pool	7m <sup>2</sup>
Mezzanine	13m <sup>2</sup>
Roof Terrace	34m <sup>2</sup>
<b>Total</b>	<b>505m<sup>2</sup></b>



**MEZZANINE**  
1:100