

# Molteni & C | Dada



Stefan Botha  
12 Sillery Private Estate  
Scullery & Kitchen - Hi-Line 6

## Timeless design

The Molteni&C kitchens are designed by the world's most prestigious architects – see VVD by Vincent Van Duysen, Banco and Vela by Luca Meda, Tivali and Trim by Dante Bonuccelli, High Line 6 by Ferruccio Laviani, inDada by Nicola Galizia, and the most recent collaborations with Yabu Pushelberg. These are kitchens of a timeless elegance, designed by the masters of international design to be lived in for many years to come.



## Technology

The design and style of Molteni&C meet the innovation of Dada Engineered, with uniquely exclusive results. Innovative solutions of a timeless allure, built to suit the customer's needs. An innovative offering in terms of form, technology and type, developed through continuous research carried out in collaboration with architects and designers. A high technological expertise, both in the field of woodworking and in that of new materials such as metals, making it possible to meet any specific project requirement.



## Innovation pioneers

Dada Engineered's strategy focuses on remaining up-to-date and pursuing innovative solutions. With this spirit, it has revolutionised the industry by introducing unique elements such as the Tivali technical column, an invisible closing mechanism, the engineering system behind the Ratio supports, and Banco, the first suspended kitchen designed by Luca Meda, made up of a patented freestanding structure that can support suspended storage solutions are designed in the pursuit of aesthetics and functionality, with an almost maniacal attention to detail. units.



## Bespoke approach

Every project is exclusive; every kitchen is unique. In-house design and production make it possible to create bespoke kitchens tailored to the needs of those who use them. A challenge whereby rational, versatile ideas turn into real living kitchens. Technical details tailored to become solid architectural elements built to last. This creative process always reinvents itself in line with changing needs and projects that reflect the personality of the customer. Spaces to interpret, changing contexts, kitchens that become architectural elements of the home. Models that are different, in terms of type, finishes and materials, but have one thing in common: the possibility to combine different elements of each series to create original solutions



## Vertical production

The Mesero production centre, where Molteni&CDada Engineered kitchens take shape, extends over a 26,000 sqm indoor area. The know-how of its more than 100 specialist technicians and 200 workers is guaranteed through special training programmes, ensuring the company's craftsmanship is handed down from generation to generation. Its partner suppliers are selected partly for their proximity, to ensure the supervision and quality of contractors. This is also home to the Research and Development Centre, a hotbed of ideas and innovation. This is where the entire production process takes place. 100% made in Italy, this is guaranteed by strict quality controls carried out with great care, from the selection of the highest quality raw materials to the end of the production process



## Sustainability

At Molteni&C, sustainability is a key mission. Materials are chosen carefully, favouring natural stones and long lasting materials such as aluminium. Suffice it to say that a typical kitchen only contains 0.15% of plastic. We source our panels from responsible suppliers that make prevalent use of recovered wood. This result is further achieved by choosing woods sourced exclusively from FSC-certified forests and natural materials with a low impact on the environment. As a result of this virtuous circle, our kitchens can be disassembled completely, recovering the materials and re-processing them in another form





A unitary project, simple and linear: Hi-Line 6 is more than just a kitchen. It's a space to live in. This space is organised with "esprit de géométrie" combined with rigorous shapes, richness of detail and care for quality in construction. The base units are taller, to hold more and better. Far from the classic concept of the kitchen, Hi-Line 6 allows for several composition options. No handles are used – instead there is a finger recess to open and close the doors.

**ELLE DECOR Design Award, 2007**



Drawers have painted black steel sides and back with a 16 mm thick wood chipboard bottom finished with black melamine facing, Anti slip rubber mats can be provided.

The drawer fronts are adjustable in all directions.

The drawers feature concealed runners, with dynamic load capacity of 40 kg and 70 kg for baskets and pan-drawers.

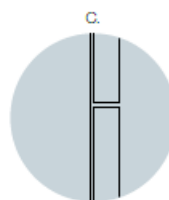
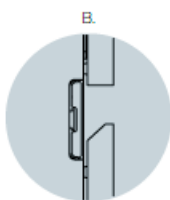
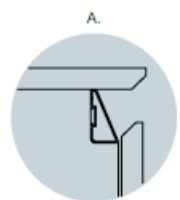
The runners are tested for 100.000 cycles, with useful depth of 500 mm, and have an automatic closing mechanism and an end rail stop, with the profile handle or handle.

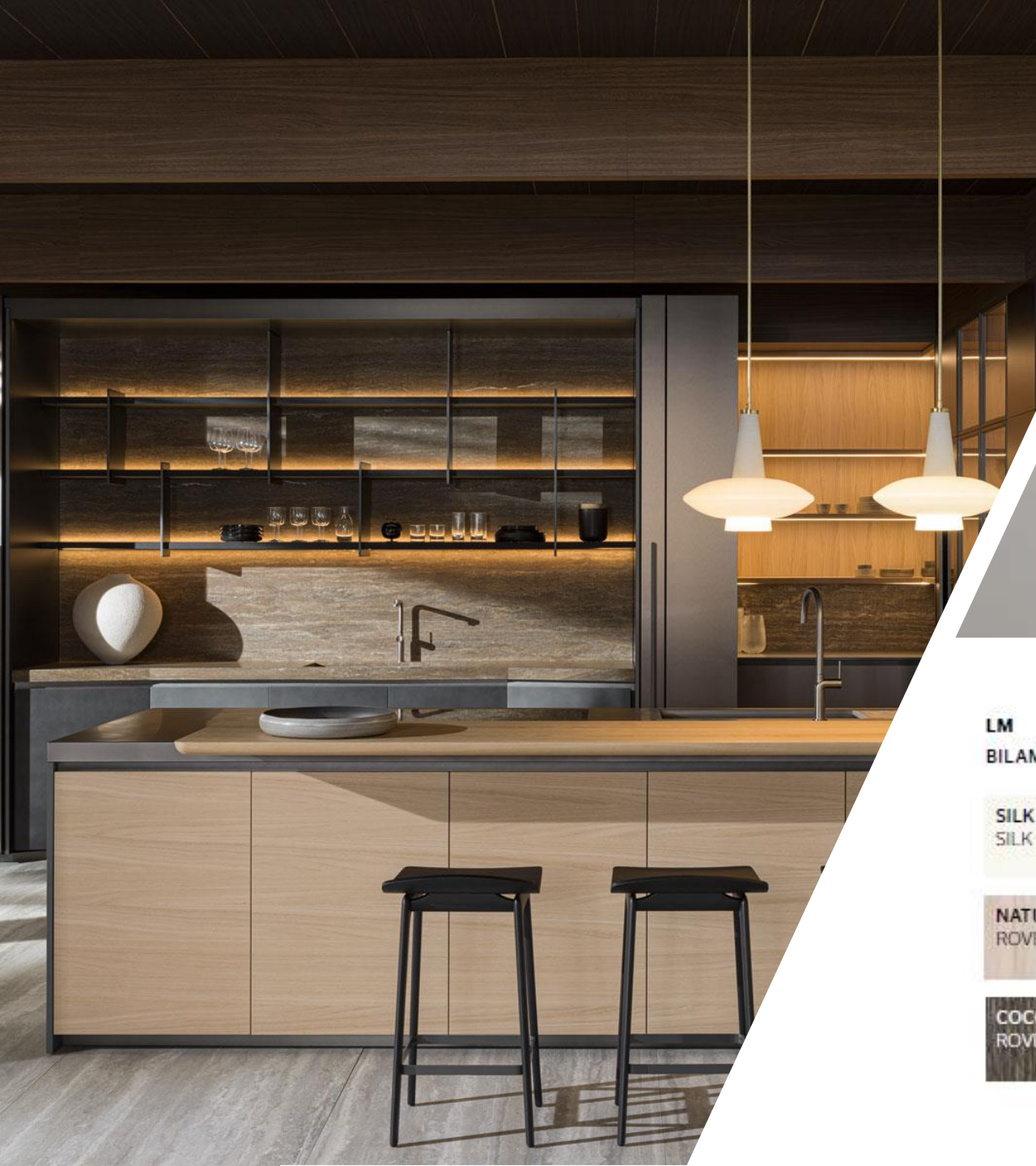
With push-pull opening, the runners have a synchronized opening system and do not have the automatic closing system.

A. First front opening on top  
Primo frontale in alto

B. Option with finger recess  
Opzione con gola

C. Option with push-pull  
Opzione con premeri-apri





**LM**

**BILAMINATES | BILAMINATI** PRICE RANGE 1

**SILK CHALK WHITE**  
SILK BIANCO CALCE

**SILK SILICA**  
SILK SILICE

**SILK DOVE GREY**  
SILK TORTORA

**NATURAL OAK**  
ROVERE NATURALE

**PLASTER ANTHRACITE**  
PLASTER ANTRACITE

**CINNAMON OAK**  
ROVERE CANNELLA

**COCOA OAK**  
ROVERE CACAO

**CADET GREY**  
GRIGIO CADETTO



Silk chalk white melamine front

Sunrise Oak snack Table

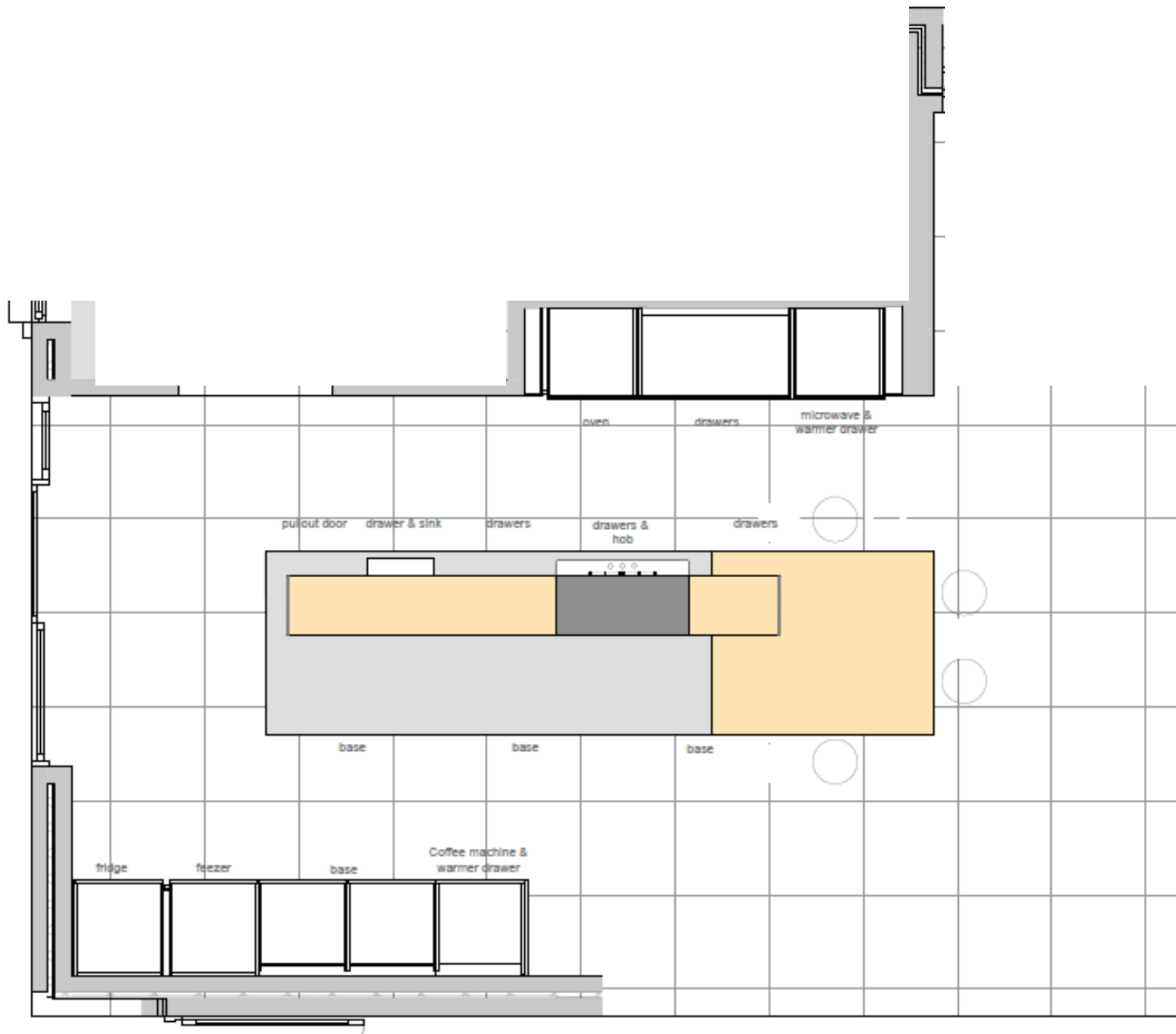
White Carrara Marble top

Pewter steel  
Finger grips and kick plates

**Molteni & C**

operated by

— MC&D —  
design house



LM  
BILAMINATES | BILAMINATI | PRICE RANGE 1

SILK CHALK WHITE SILK BIANCO CALCE	SILK SILICA SILK SILICE	SILK DOVE GREY SILK TORTORA
NATURAL OAK ROVERE NATURALE	PLASTER ANTHRACITE PLASTER ANTRACITE	CINNAMON OAK ROVERE CANNELLA
COCOA OAK ROVERE CACAO	CADET GREY GRIGIO CADETTO	

Molteni & C

operated by

— MC&D —  
design house

LM

BILAMINATES | BILAMINATI | PRICE RANGE 1

SILK CHALK WHITE  
SILK BIANCO CALCE

SILK SILICA  
SILK SILICE

SILK DOVE GREY  
SILK TORTORA

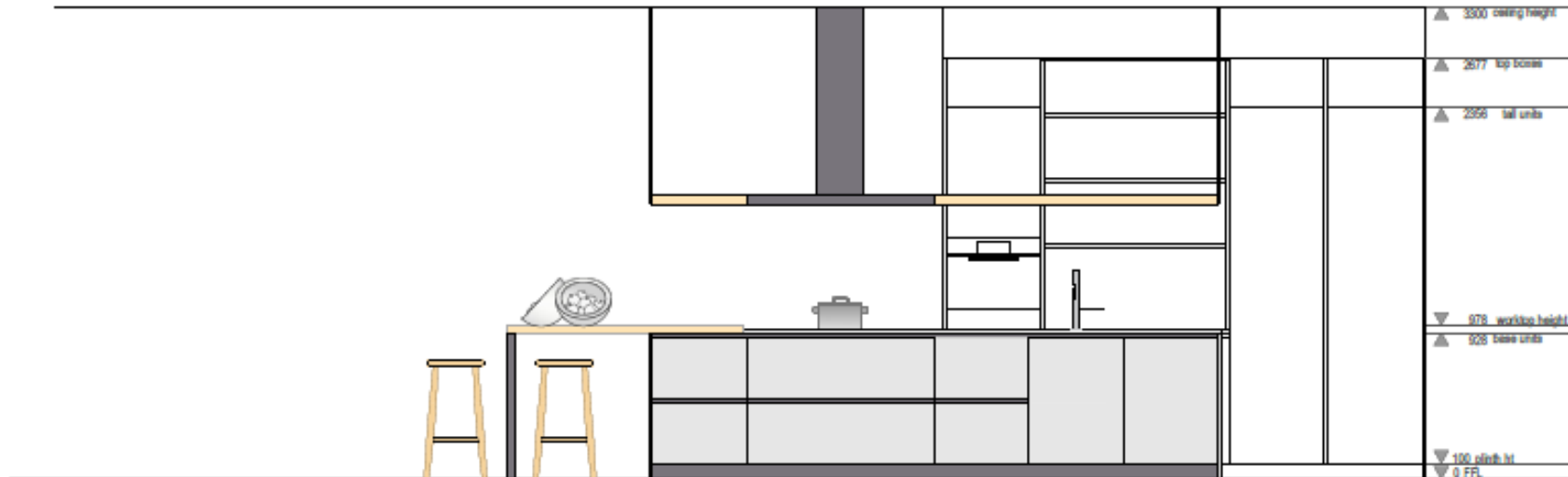
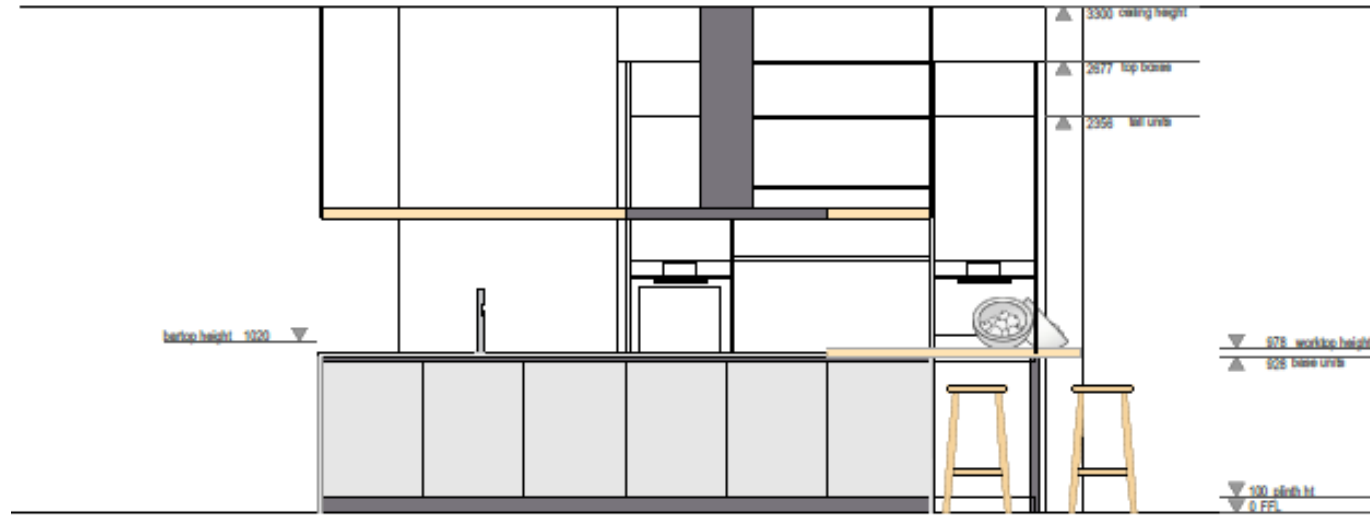
NATURAL OAK  
ROVERE NATURALE

PLASTER ANTHRACITE  
PLASTER ANTRACITE

CINNAMON OAK  
ROVERE CANNELLA

COCOA OAK  
ROVERE CACAO

CADET GREY  
GRIGIO CADETTO

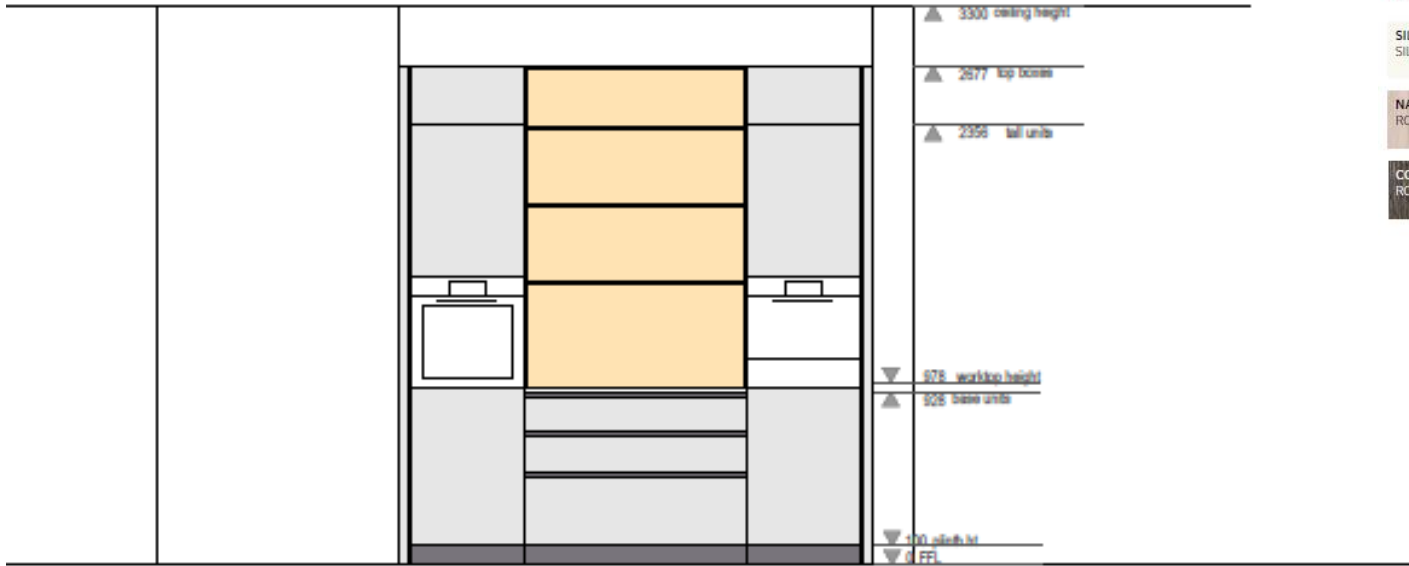


Molteni & C

operated by

MC&D  
design house





LM

BILAMINATES | BILAMINATI | PRICE RANGE 1

SILK CHALK WHITE  
SILK BIANCO CALCE

SILK SILICA  
SILK SILICE

SILK DOVE GREY  
SILK TORTORA

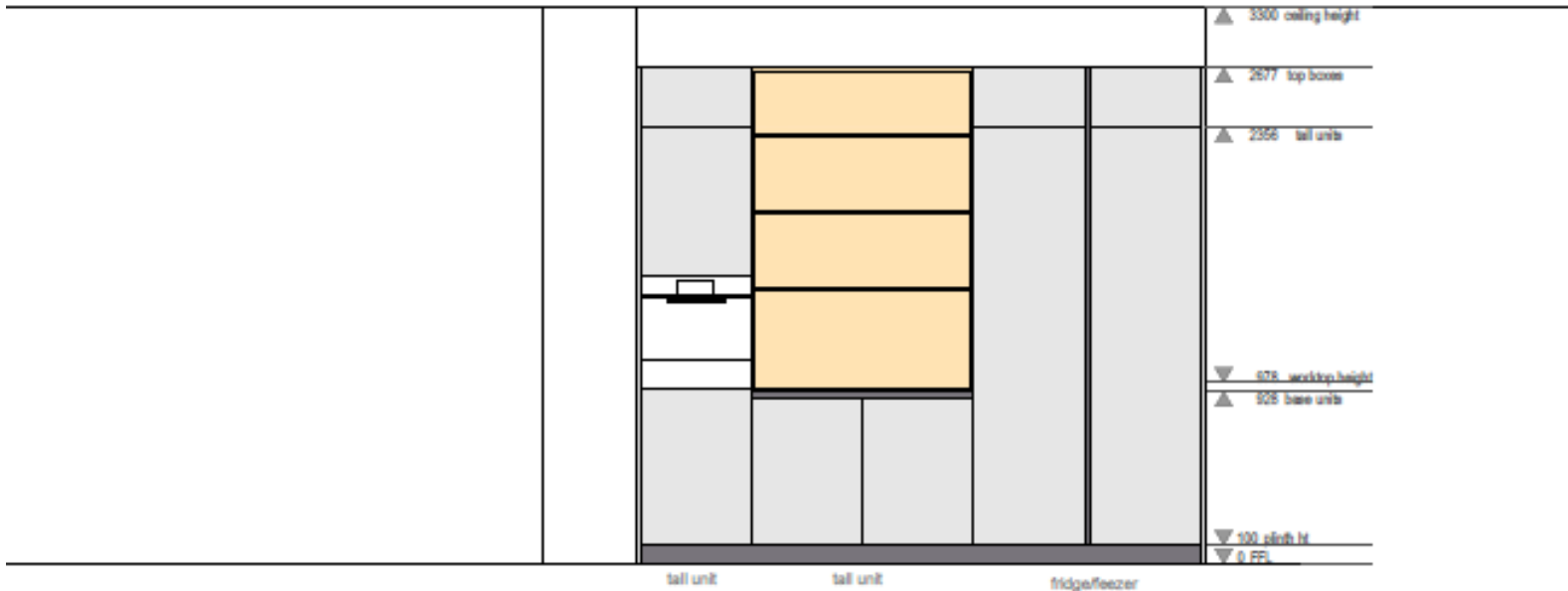
NATURAL OAK  
ROVERE NATURALE

PLASTER ANTHRACITE  
PLASTER ANTRACITE

CINNAMON OAK  
ROVERE CANNELLA

COCOA OAK  
ROVERE CACAO

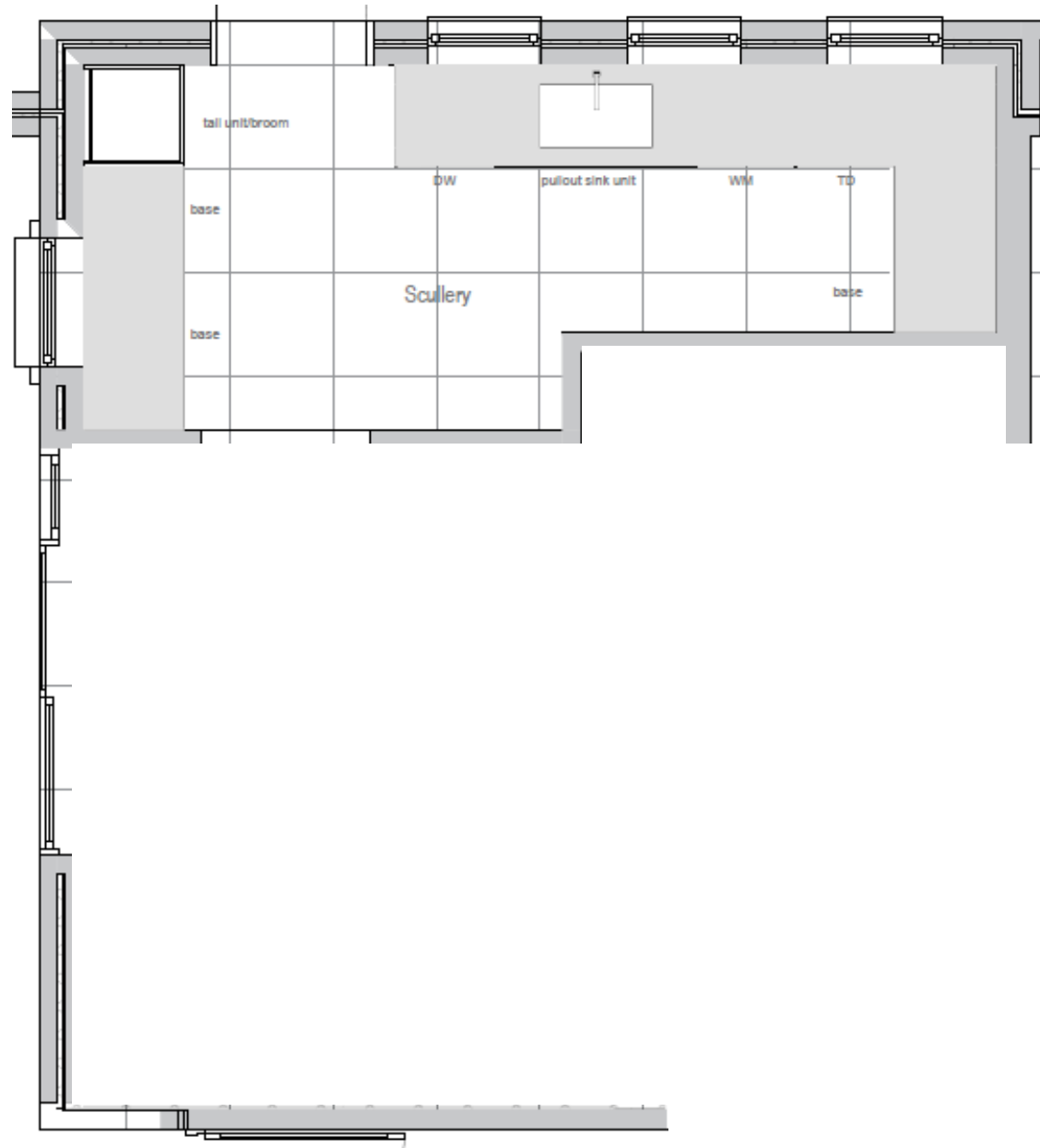
CADET GREY  
GRIGIO CADETTO



Molteni & C

operated by

MC&D  
design house



LM

BILAMINATES | BILAMINATI | PRICE RANGE 1



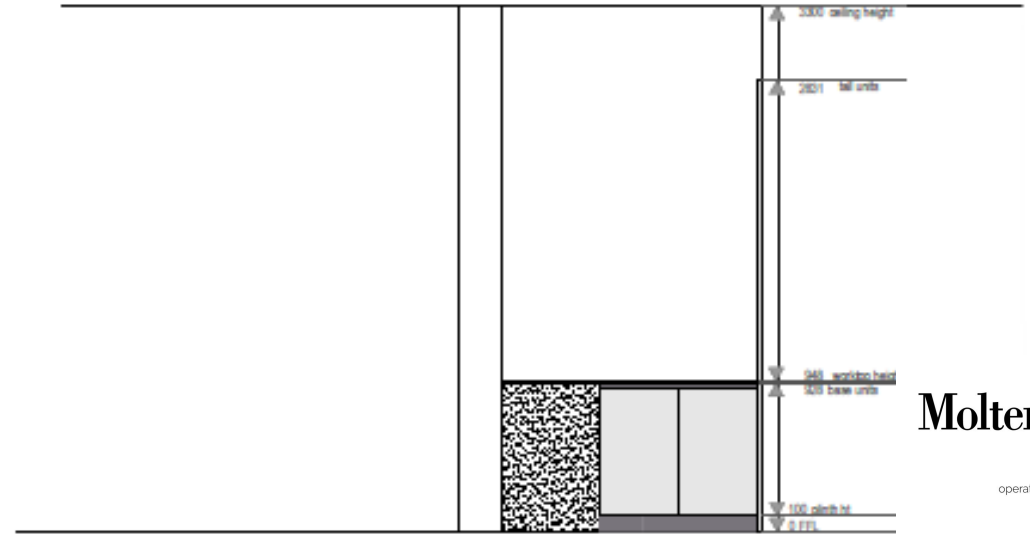
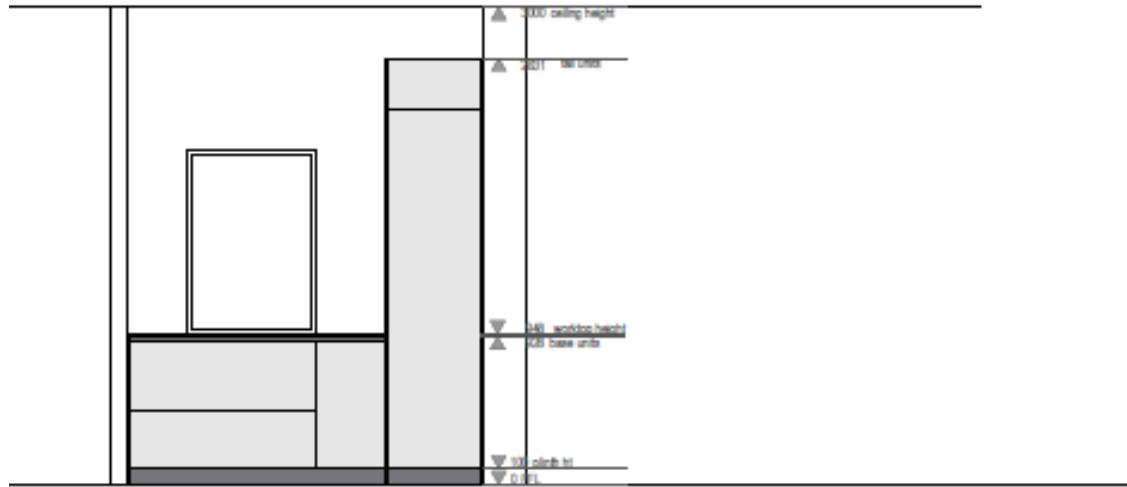
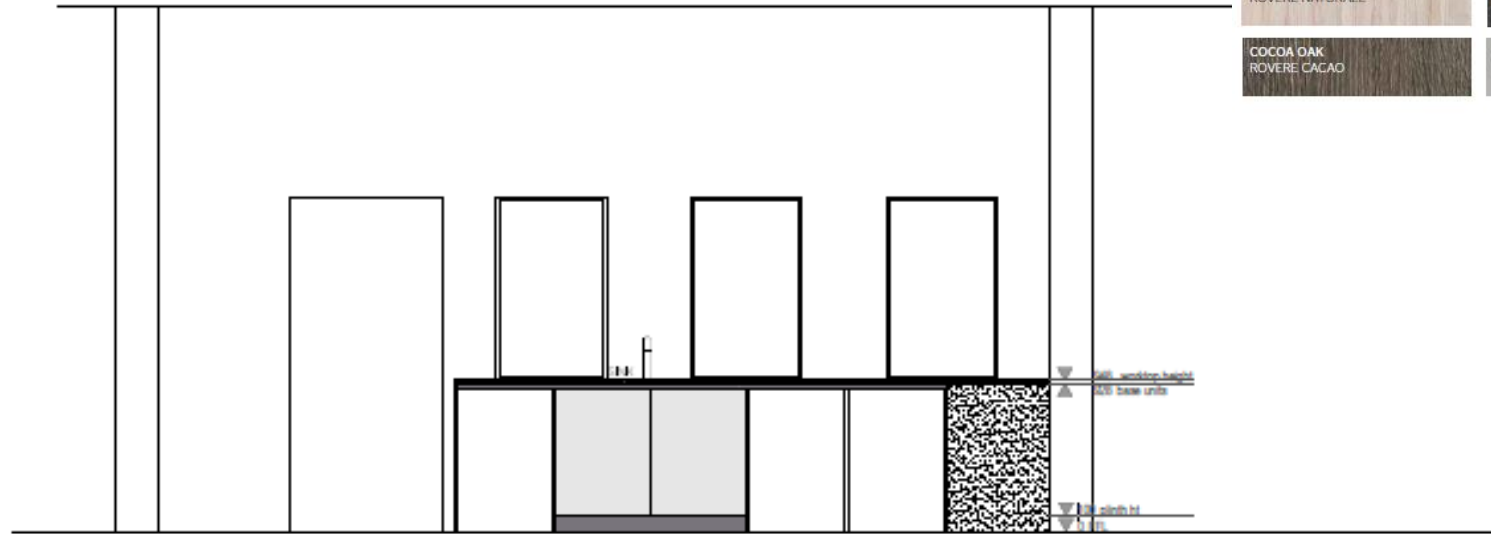
**Molteni & C**

operated by

— MC&D —  
design house

LM  
BILAMINATES | BILAMINATI | PRICE RANGE 1

SILK CHALK WHITE SILK BIANCO CALCE	SILK SILICA SILK SILICE	SILK DOVE GREY SILK TORTORA
NATURAL OAK ROVERE NATURALE	PLASTER ANTHRACITE PLASTER ANTRACITE	CINNAMON OAK ROVERE CANNELLA
COCOA OAK ROVERE CACAO	CADET GREY GRIGIO CADETTO	



Molteni & C

operated by

MC&D  
design house















1. Base unit

In wood chipboard with tobacco oak or slate melamine finish, with vertical parts 18 mm thick and horizontal parts 22 mm thick. Edges are covered with ABS.

2. Base unit, back cross piece

In natural extruded aluminium to guarantee greater structural stability and duration in damp conditions, the base unit back cross piece is ready for insertion of the back panel 8 mm thick. Its position leaves a gap to the wall giving clearance for plumbing.

3. Base unit, front cross piece

In natural extruded aluminium which gives a high level technical performance, and shaped to take the practical removable silicon gasket, which is both protective and dust proof. It is easy to clean and does not get dirty with the passing of time. Silicon gasket not available on INDada and Prime.

4. Base unit, bottom

The base unit bottom front edge features a special silicon gasket, obtained through a special process which ensures complete isolation of the component from water infiltration. Not available on INDada and Prime.





#### 5. Base unit, skirting

In special extruded aluminium which as well as guaranteeing greater resistance and duration in damp conditions, it permits the fixing of further practical elements: upper sponge to allow for air circulation, pressure hook peg on adjustable foot, dustproof silicon gasket to the floor.

#### 6. Suspended base unit, fixing

With the same technical features of the other base units, they are wall mounted on support plates thanks to an exclusive high capacity adjustable mechanism.

#### 7. Sink base unit

Parts of the structure that can come in contact with water are made of V100 class water-resistant material and edged with glues that have high resistance to water, steam and heat. The bottom of the sink base, for all kitchen models, is fitted with a satin aluminium tray provided with PVC gaskets.

The vertical sides are internally coated with a satin aluminium foil, except for InDada and Prime.



**Molteni & C**

operated by

— MC&D —  
design house

# Molteni & C

operated by

——— MC&D ———  
d e s i g n   h o u s e

<https://capetown.moltenigroup.com/>

3 Dock Road, Waterway House, Canal District,  
V&A Waterfront, Cape Town, 8001